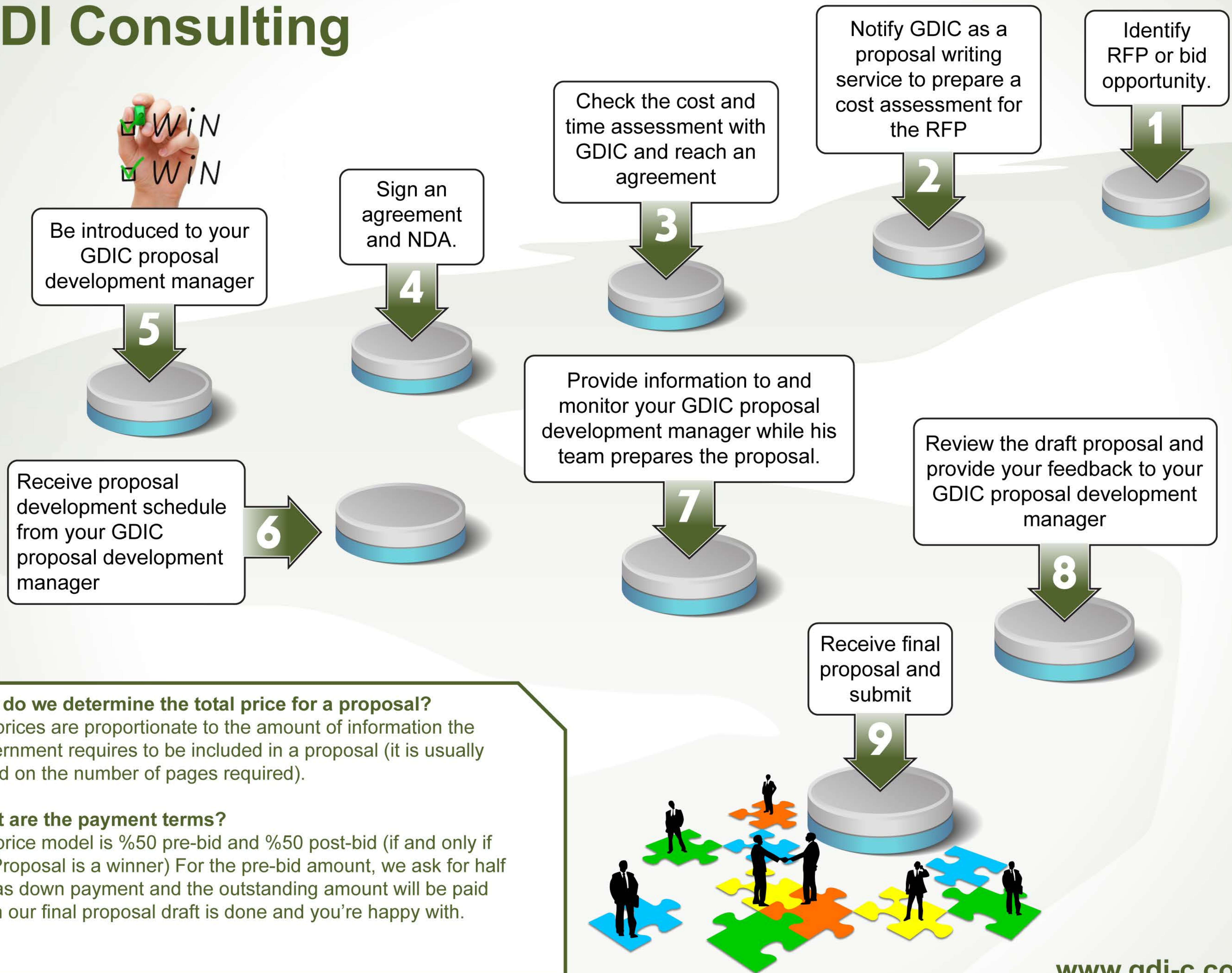


# HOW TO DO BUSINESS WITH GDI Consulting



## How do we determine the total price for a proposal?

Our prices are proportionate to the amount of information the Government requires to be included in a proposal (it is usually based on the number of pages required).

## What are the payment terms?

Our price model is %50 pre-bid and %50 post-bid (if and only if our Proposal is a winner) For the pre-bid amount, we ask for half of it as down payment and the outstanding amount will be paid when our final proposal draft is done and you're happy with.